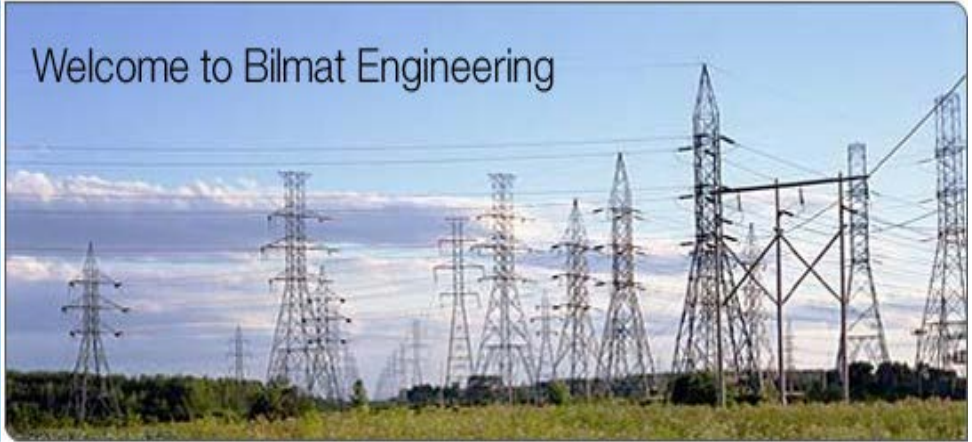




Bilmat Engineering
WE ARE THE EXPERTS

Welcome to Bilmat Engineering



BILMAT ENGINEERING

(An ISO 9001:2008 certified company)

ADDRESS

352,353 G.I.D.C, INDUSTRIAL ESTATE,
POR, RAMANGAMDI,
VADODARA -391 243, GUJARAT.

PROPRIETOR

DIPAK L PATEL

PHONE NO

0265 6540425

E-MAIL

dipak@bilmatengg.com
bilmatengg@gmail.com

SOLAR MMS CATALOUGE

BILMAT SOLAR MMS

Highlights of BILMAT SOLAR MMS Ground Mounting System:

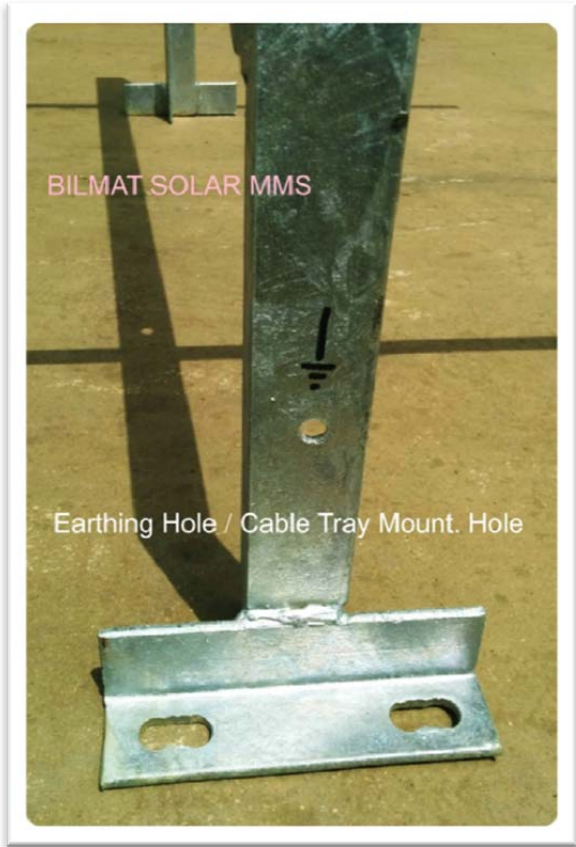
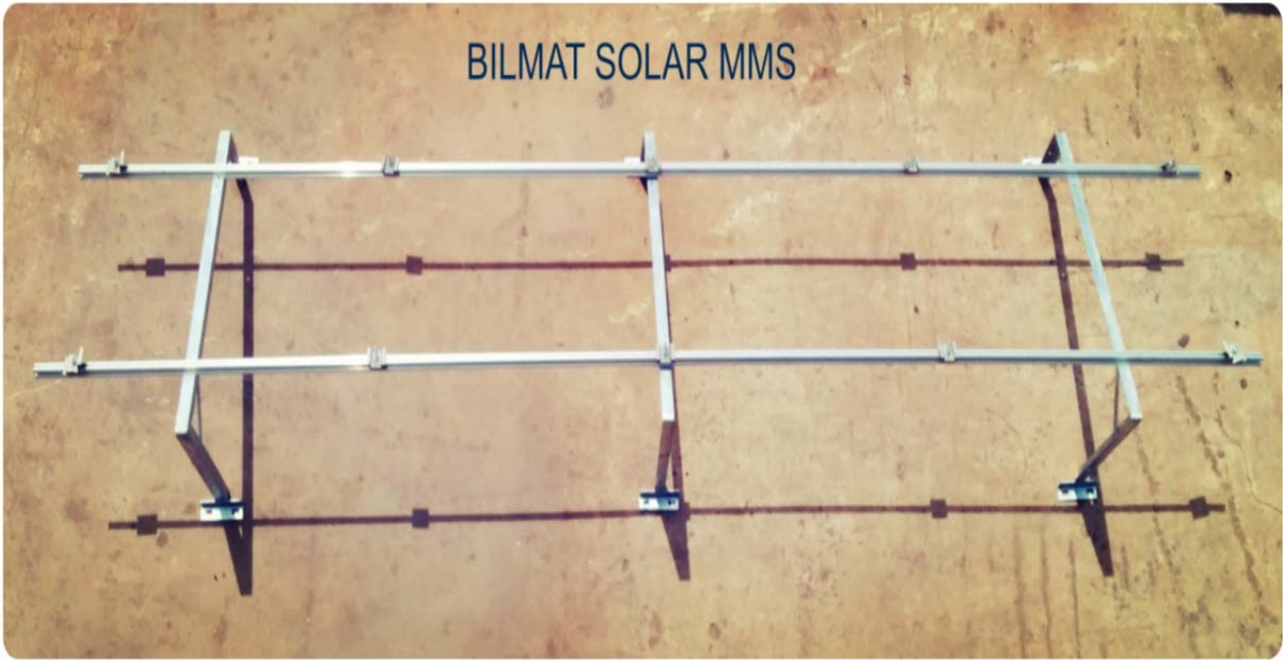
- Hot Dip Galvanized supporting frame.
- Aluminium Top Purling.
- Alu/SS PV mounting Clamps and Hardware.
- Few parts hence easy to assemble.
- Modules are arranged vertically in a Single Row.
- Standard tilt angles 23 Degree - other angles are possible on prior consultation with us.
- Great pricing – gives you a competitive edge.
- Less expensive.
- Fast installation.
- Readily available.
- Benefits: No drilling on the field, No need of drills.

Comparison

	BILMAT SOLAR MMS	Others
Hot Dip Galvanized MS Support Frame	<input checked="" type="checkbox"/>	<input type="checkbox"/>
Aluminium Top Purling with Full Adjustment	<input checked="" type="checkbox"/>	<input type="checkbox"/>
SS Clamp (U,Z) and SS Connecting Hardware for PV Mounting	<input checked="" type="checkbox"/>	<input type="checkbox"/>
Requires Field Drilling	<input type="checkbox"/>	<input checked="" type="checkbox"/>
Hole for Earthing and Cable Tray	<input checked="" type="checkbox"/>	<input type="checkbox"/>

BILMAT SOLAR MMS





'Let BILMAT be a part of your first step towards cleaner & brighter future'

EASY TO ASSEMBLE

