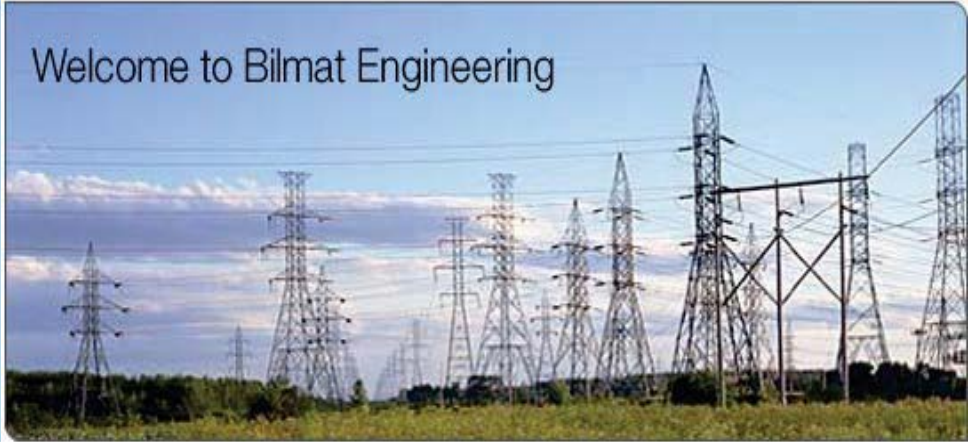




Bilmat Engineering
WE ARE THE EXPERTS

Welcome to Bilmat Engineering



BILMAT ENGINEERING

(An ISO 9001:2008 certified company)

ADDRESS

352,353 G.I.D.C, INDUSTRIAL ESTATE,
POR, RAMANGAMDI,
VADODARA -391 243, GUJARAT.

PROPRIETOR

DIPAK L PATEL

PHONE NO

0265 6540425

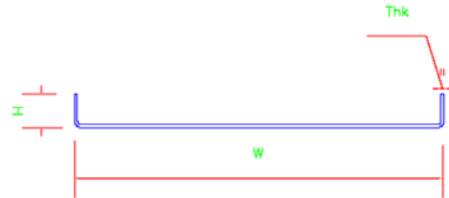
E-MAIL

dipak@bilmatengg.com
bilmatengg@gmail.com

WEBSITE

www.bilmatengg.com

Light Duty Straight Flange Perforated Cable Trays

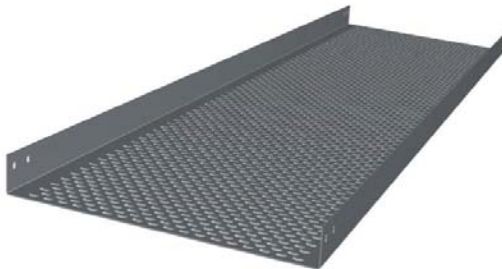


Light Duty Straight Flange

W	H	THK
50mm to 900mm	25mm	1.6mm- 2mm

Note : Above size are standard, any size can be offered.
i) Width from 50mm to 900mm
ii) Thickness from 1.6 mm to 2mm

Medium Duty Straight Flange Perforated Cable Trays



Medium Duty Straight Flange

W	H	THK
100mm to 900mm	50mm	1.6mm- 2mm

Note : Above size are standard, any size can be offered.
i) Width from 100mm to 900mm
ii) Thickness from 1.6 mm to 2mm

90° Horizontal Bend Light and Medium Duty Straight Flange Perforated Cable Trays



90° Horizontal Bend Light and Medium Duty Straight Flange

W	H	THK
100mm to 900mm	25mm, 50mm	1.6mm- 2mm

Note : Above size are standard, any size can be offered.
 i) Width from 100mm to 900mm
 ii) Thickness from 1.6 mm to 2mm
 iii) Radius 450mm, 600mm, 1000mm, 1500mm, 2000mm

90° Vertical Bend Light and Medium Duty Straight Flange Perforated Cable Trays

INSIDE



OUTSIDE



90° Vertical Light and Medium Duty Straight Flange

W	H	THK
100mm to 900mm	25mm, 50mm	1.6mm- 2mm

Note : Above size are standard, any size can be offered.
 i) Width from 100mm to 900mm
 ii) Thickness from 1.6 mm to 2mm
 iii) Radius 450mm, 600mm, 1000mm, 1500mm, 2000mm

' T ' Bend Light and Medium Duty Straight Flange Perforated Cable Trays

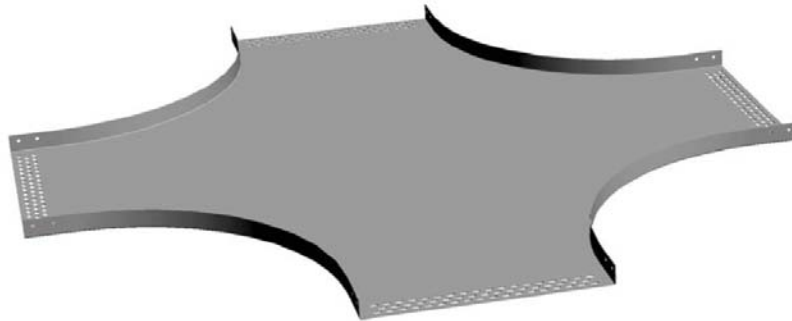


' T ' Bend Light and Medium Duty Straight Flange

W	H	THK
100mm to 900mm	25mm, 50mm	1.6mm- 2mm

Note : Above size are standard, any size can be offered.
i) Width from 100mm to 900mm
iii) Radius 450mm, 600mm, 1000mm, 1500mm, 2000mm

' X ' - Cross Bend Light and Medium Duty Straight Flange Perforated Cable Trays



' X ' - Cross Bend Light and Medium Duty Straight Flange

W	H	THK
100mm to 900mm	25mm, 50mm	1.6mm- 2mm

Note : Above size are standard, any size can be offered.
i) Width from 100mm to 900mm
ii) Thickness from 1.6 mm to 2mm
iii) Radius 450mm, 600mm, 1000mm, 1500mm, 2000mm

**Reducer Light and Medium Duty Straight Flange
Perforated Cable Trays**

Centre Reducer



Side Reducer



Reducer Light and Medium Duty Straight Flange

W-1	W-2	H	THK
100mm to 900mm	100mm to 900mm	25mm, 50mm	1.6mm- 2mm

Note : Above size are standard, any size can be offered.
 i) Width from 100mm to 900mm
 ii) Thickness from 1.6 mm to 2mm
 iii) Specify type and thickness of reducer while ordering

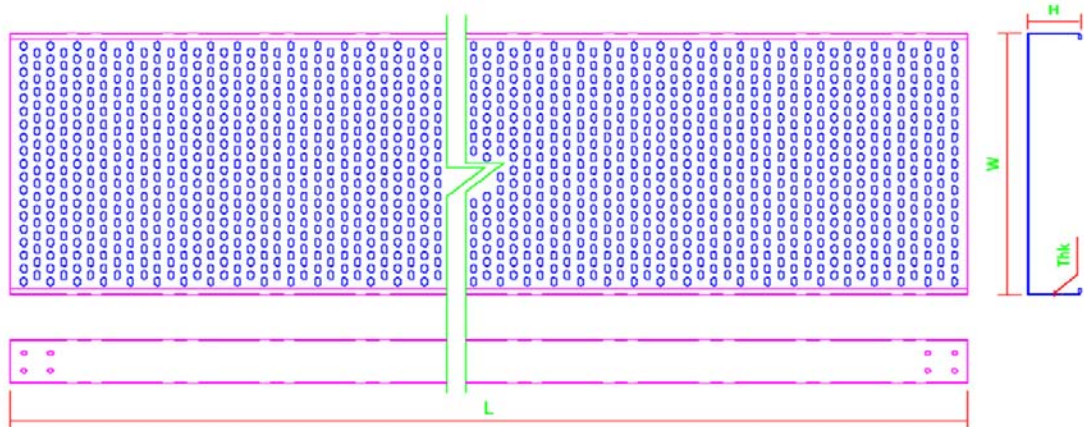
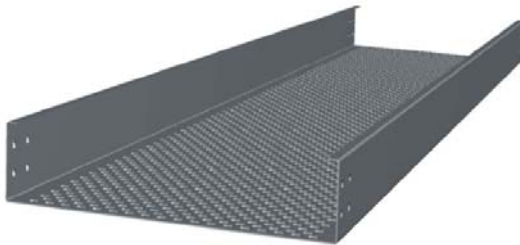
**Coupler Plate for Light and Medium Duty Straight Flange
Perforated Cable Trays**



Coupler Plate Light and Medium Duty Straight Flange

W	H	THK
210mm	20mm, 40mm	1.6mm- 2mm

Heavy Duty with Inner Flange Perforated Cable Trays

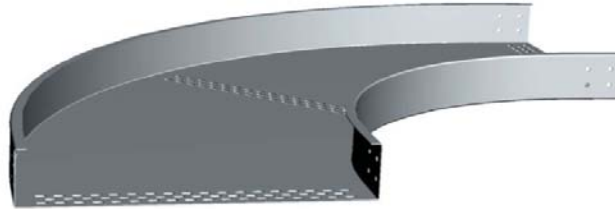


Heavy Duty with Inner Flange

W	Inner Bend	H	THK
100mm to 900mm	15mm	100mm	1.6mm- 2mm

- Note :
- i) Width from 100mm to 900mm
 - ii) Thickness from 1.6 mm to 2mm
 - iii) Inner Bend for Extra Strength

90° Vertical Bend Heavy Duty with Inner Flange Perforated Cable Trays



90° Vertical Bend Heavy Duty with Inner Flange

W	Inner Bend	H	THK
100mm to 900mm	15mm	100mm	1.6mm- 2mm

Note : Above size are standard, any size can be offered.
 i) Width from 100mm to 900mm
 ii) Thickness from 1.6 mm to 2mm
 iii) Radius 450mm, 600mm, 1000mm, 1500mm, 2000mm
 iv) Inner Bend for Extra Strength

90° Horizontal Bend Heavy Duty with Inner Flange Perforated Cable Trays

INSIDE



OUTSIDE



90° Horizontal Bend Heavy Duty with Inner Flange

W	Inner Bend	H	THK
100mm to 900mm	15mm	100mm	1.6mm- 2mm

Note : Above size are standard, any size can be offered.
 i) Width from 100mm to 900mm
 ii) Thickness from 1.6 mm to 2mm
 iii) Radius 450mm, 600mm, 1000mm, 1500mm, 2000mm
 iv) Inner Bend for Extra Strength

' T ' Bend Heavy Duty with Inner Flange Perforated Cable Trays

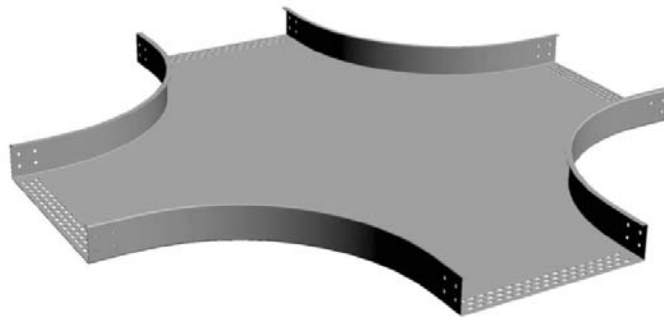


' T ' Bend Heavy Duty with Inner Flange

W	Inner Bend	H	THK
100mm to 900mm	15mm	100mm	1.6mm- 2mm

Note : Above size are standard, any size can be offered.
 i) Width from 100mm to 900mm
 ii) Thickness from 1.6 mm to 2mm
 iii) Radius 450mm, 600mm, 1000mm, 1500mm, 2000mm
 iv) Inner Bend for Extra Strength

' X ' - Cross Bend Heavy Duty with Inner Flange Perforated Cable Trays



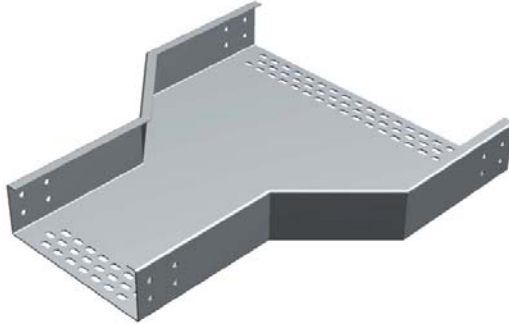
' X ' - Cross Bend Heavy Duty with Inner Flange

W	Inner Bend	H	THK
100mm to 900mm	15mm	100mm	1.6mm- 2mm

Note : Above size are standard, any size can be offered.
 i) Width from 100mm to 900mm
 ii) Thickness from 1.6 mm to 2mm
 iii) Radius 450mm, 600mm, 1000mm, 1500mm, 2000mm
 iv) Inner Bend for Extra Strength

**Reducer Heavy Duty with Inner Flange
Perforated Cable Trays**

Centre Reducer



Side Reducer



Reducer Heavy Duty with Inner Flange

W-1	W-2	H	THK
100mm to 900mm	100mm to 900mm	100mm	1.6mm- 2mm

Note : Above size are standard, any size can be offered.
 i) Width from 100mm to 900mm
 ii) Thickness from 1.6 mm to 2mm
 iii) Inner Bend for Extra Strength
 iv) Specify type and thickness of reducer while ordering

**Coupler Plate for Heavy Duty with Inner Flange
Perforated Cable Trays**

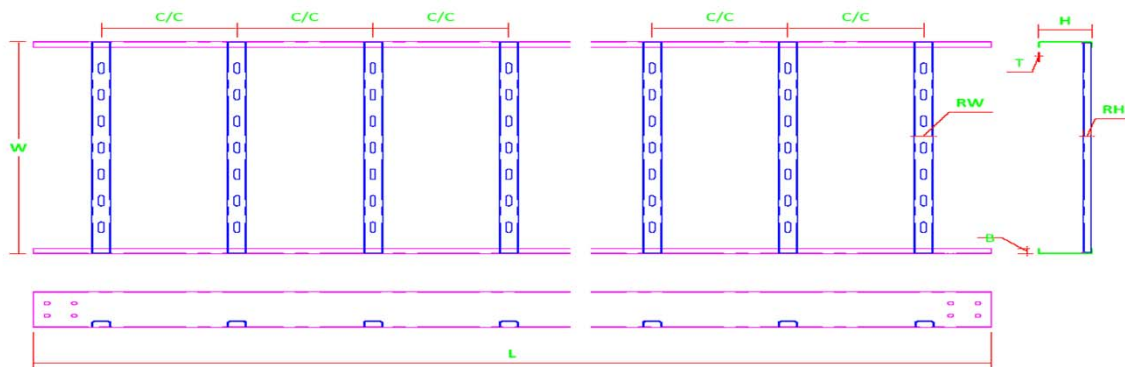
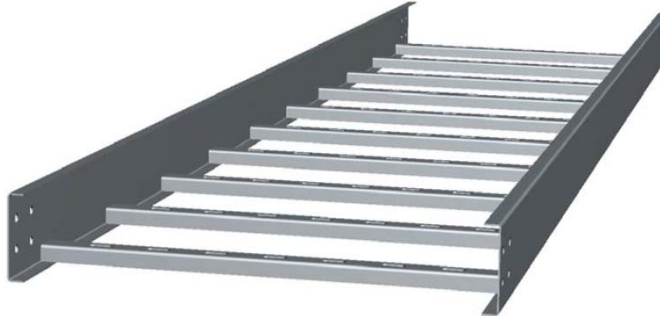


Coupler Plate for Heavy Duty with Inner Flange

W	H	THK
210mm	75mm	1.6mm- 2mm

Coupler Plate supply with M8X20 Bolt, Nut and Plain Washer (Electroplated) - 8Sets per Coupler

Ladder Type Cable Tray



W	Width of Tray
L	Length of Tray
H	Height of Tray
T	Thickness of Sheet
B	Bend
RH	Rung Height
RW	Rung Width
C/C	Center to Center Distance between Rung

W	H
100 mm to 1000mm	50mm, 75mm, 100mm

Standard Length of Tray 2500mm
 Thickness of Sheet 1.6 mm to 3mm
 Above size are standard, any size can be offered.

90° Horizontal Bend for Ladder Cable Tray



90° Horizontal Bend for Ladder Cable Tray

W	H	THK
100mm to 1000mm	50mm, 75mm, 100mm	1.6mm- 3mm

Note : Above size are standard, any size can be offered.
 i) Width from 100mm to 1000mm
 ii) Thickness from 1.6 mm to 3mm
 iii) Radius 450mm, 600mm, 1000mm, 1500mm, 2000mm

90° Vertical Bend for Ladder Cable Tray

INSIDE



OUTSIDE



90° Vertical Bend for Ladder Cable Tray

W	H	THK
100mm to 1000mm	50mm, 75mm, 100mm	1.6mm- 3mm

Note : Above size are standard, any size can be offered.
 i) Width from 100mm to 1000mm
 ii) Thickness from 1.6 mm to 3mm
 iii) Radius 450mm, 600mm, 1000mm, 1500mm, 2000mm

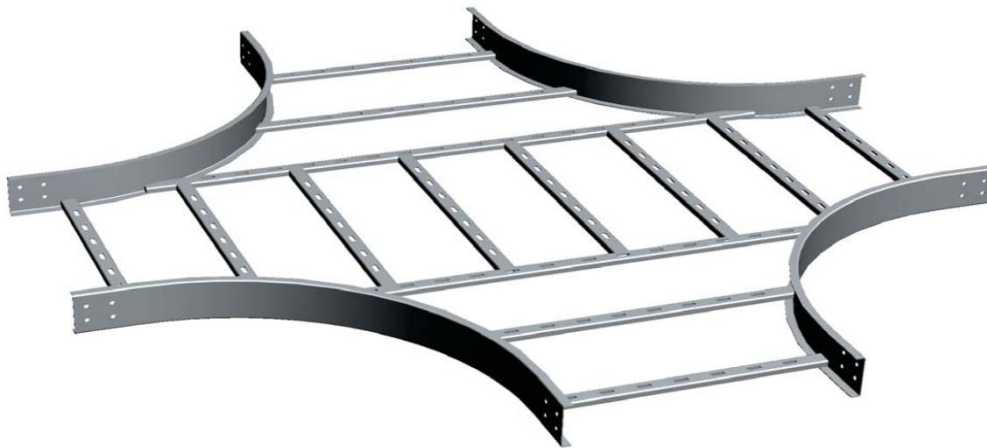
' T ' Bend for Ladder Cable Tray



W	H	THK
100mm to 1000mm	50mm, 75mm, 100mm	1.6mm- 3mm

Note : Above size are standard, any size can be offered.
 i) Width from 100mm to 1000mm
 ii) Thickness from 1.6 mm to 3mm
 iii) Radius 450mm, 600mm, 1000mm, 1500mm, 2000mm

' X ' - Cross Bend for Ladder type Cable Tray



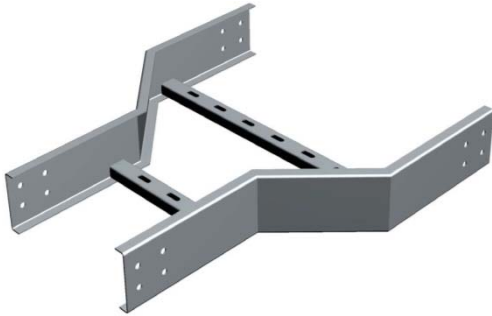
' X ' - Cross Bend for Ladder type Cable Tray

W	H	THK
100mm to 1000mm	50mm, 75mm, 100mm	1.6mm- 3mm

Note : Above size are standard, any size can be offered.
 i) Width from 100mm to 1000mm
 ii) Thickness from 1.6 mm to 3mm
 iii) Radius 450mm, 600mm, 1000mm, 1500mm, 2000mm

Reducer for Ladder Type Cable Tray

Centre Reducer



Side Reducer



Reducer Light and Medium Duty Straight Flange

W-1	W-2	H	THK
100mm to 1000mm	100mm to 1000mm	50mm, 75mm, 100mm	1.6mm- 3mm

- Note :
- Above size are standard, any size can be offered.
 - i) Width from 100mm to 1000mm
 - ii) Thickness from 1.6 mm to 3mm
 - iii) Specify type and thickness of reducer while ordering
- Side Reducer available in Left and Right Position.

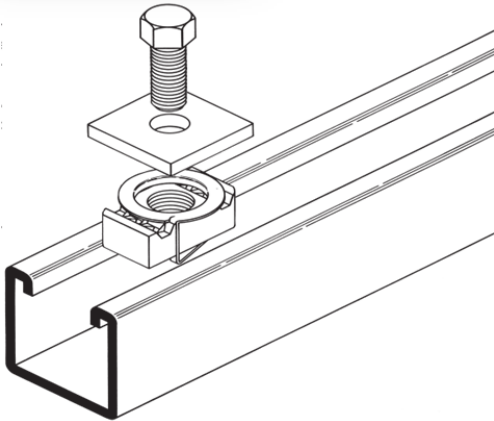
Coupler Plate for Ladder Cable Tray



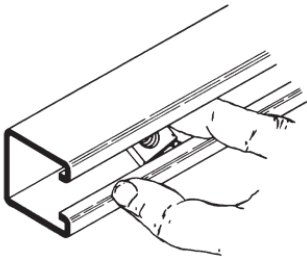
Coupler Plate for Ladder Cable Tray

W	H	THK
210mm	75mm	1.6mm- 3mm

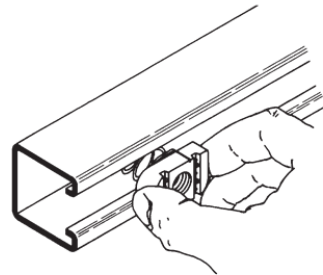
Coupler Plate supply with M8X20 Bolt, Nut and Plain Washer (Electroplated) - 8Sets per Coupler



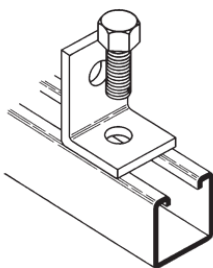
- No Welding
- No Drilling
- Use Your Imagination



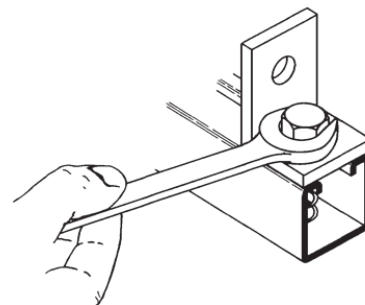
Strut channel nut may be inserted anywhere
Along continuous slot. Designed for easy insertion
and self-alignment.



A 90° turn aligns channel nut grooves with inturned lips
of the channel.



Position fitting over channel nut and insert bolt to start
any connection.

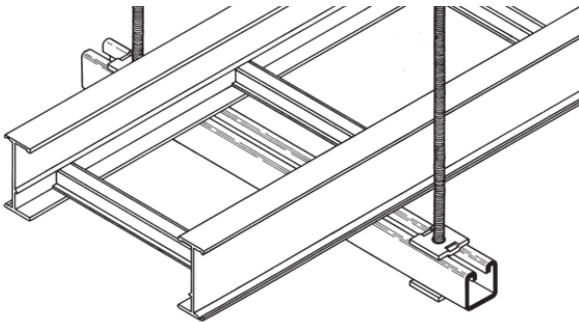
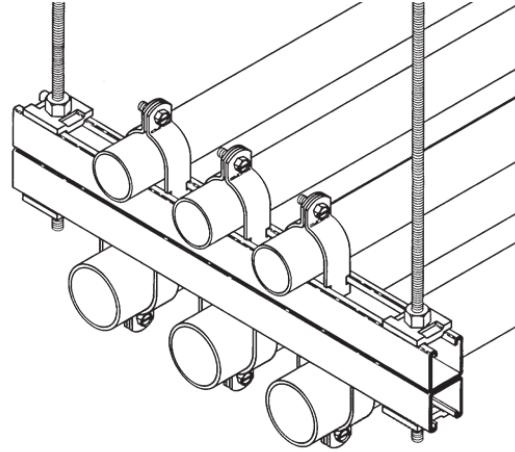


With the twist of a wrench, channel nut locks its teeth
firmly against inturned lips.

Strut Support system provides an economical solution for electrical, mechanical and industrial supports with an unlimited variety of applications in the construction industry.

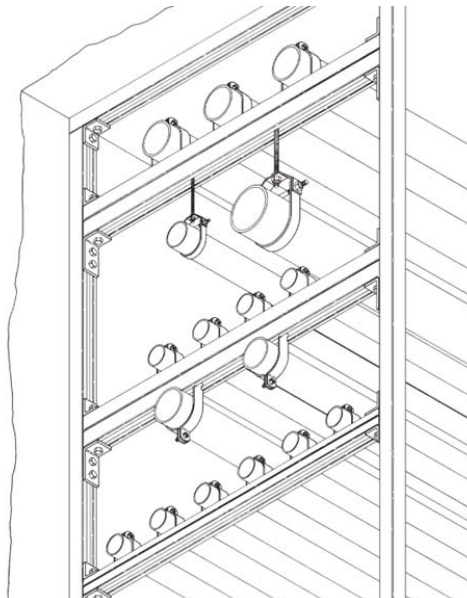
Electrical Application Applications

- Lighting Fixture Supports
- Raceway Systems
- Trapeze Hangers
- Pipe & Conduit Supports
- Cable Tray Supports
- Beam Adjustments

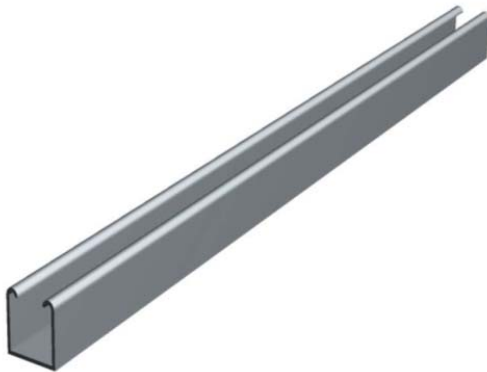


Metal Framing Mechanical Applications

- Piping Racks
- Tunnel Pipe Stanchions
- Concrete Inserts
- Beam Attachments
- Pipe Risers



Support Channel (Strut Channel) for Cable Tray Support
Strut Channel



Slotted Strut Channel



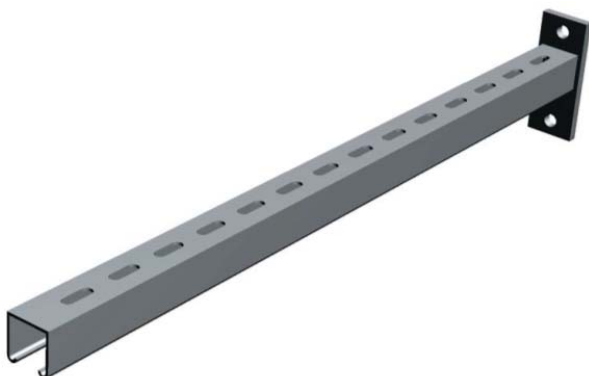
Support Channel (Strut Channel) for Cable Tray Support

Size	Length	Thickness
41x41	1000mm to 3000mm	2mm, 2.5mm

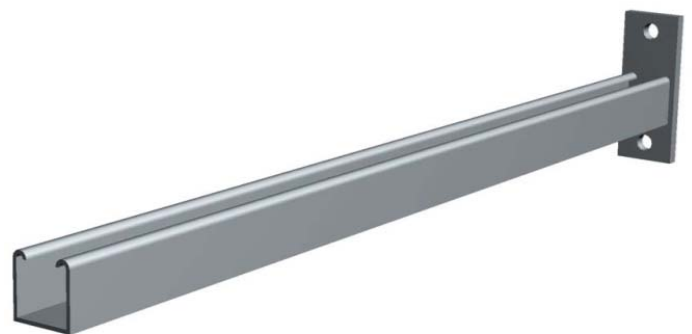
Note : Above size are standard, any size can be offered.

Medium Duty Cantilever Support Channel (Strut Channel)

Strut Slotted Cantilever



Strut Cantilever



Heavy Duty Cantilever Support Channel (Strut Channel)

